



**REALISTIC
MEDICINE**

**Conference 2023:
Sustainable Care
that Matters**



@realisticmed
#RealMed2023

www.realisticmedicine.scot

Implementing Value Based Healthcare in Wales

Dr Sally Lewis,

**Director National Clinical Lead for Value-Based and Prudent
Healthcare, Welsh Value in Health Centre & Professor at
Swansea School of Medicine**

Adele Cahill

**Assistant Director for Value-Based Healthcare, Welsh Value in
Health Centre and Aneurin Bevan University Health Board**

Learning Outcomes

- Culture, education and engagement VBHC, with its roots in Prudent Healthcare (Wales) and Realistic Medicine (Scotland)
- The role of patient-facing technology and data
- Growing the network and community of practice
- Increasing value across pathways of care, some key learning

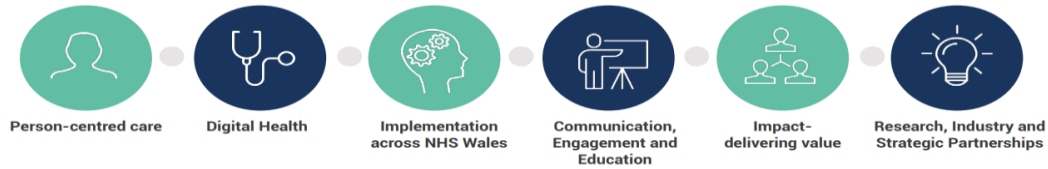
Culture, Education and Engagement



Definition: Value-based healthcare is the equitable, sustainable and transparent use of the available resources to achieve better outcomes and experiences for every person

• Hurst L, Mahtani K, Pluddemann A, Lewis S, Harvey K, Briggs A, Boylan A-M, Bajwa R, Haire K, Entwistle A, Handa A and Henaghan C CEBM, University of Oxford

Role of patient-facing technology and data

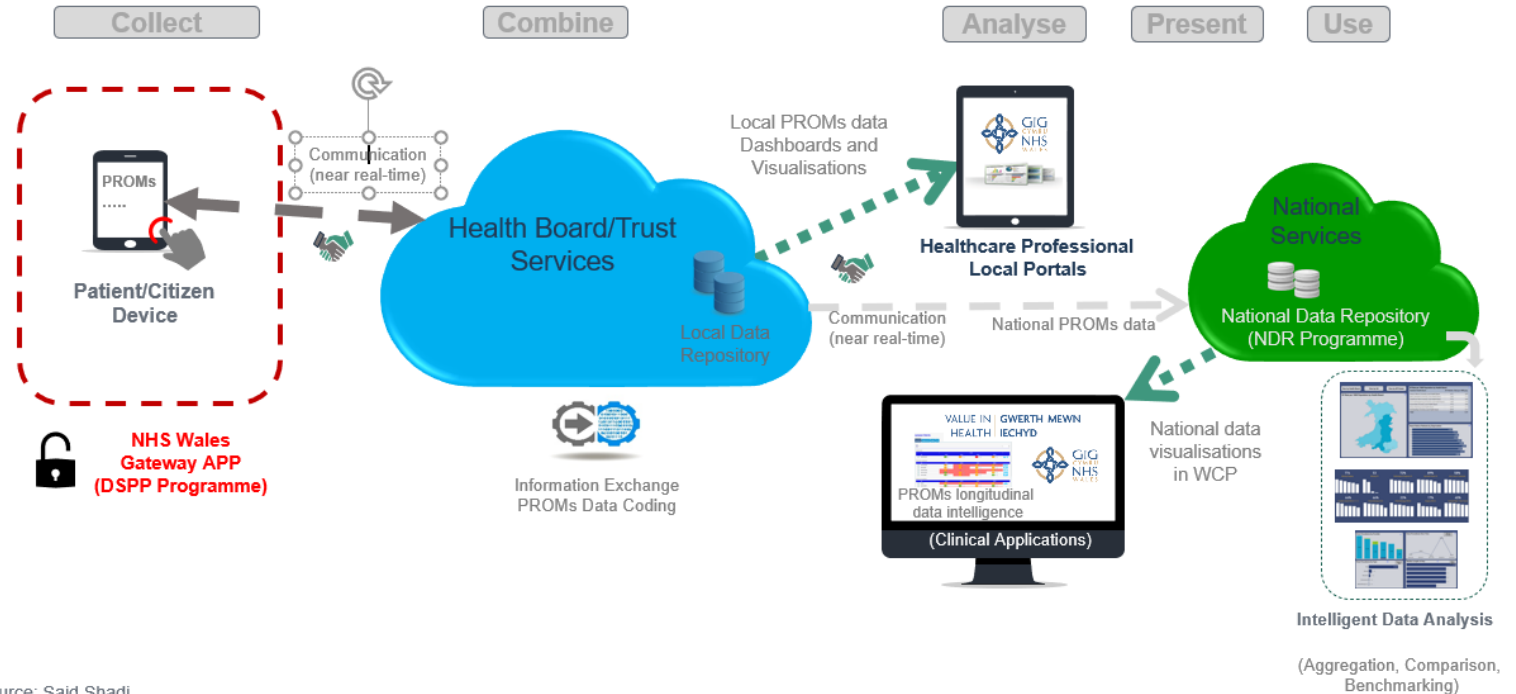
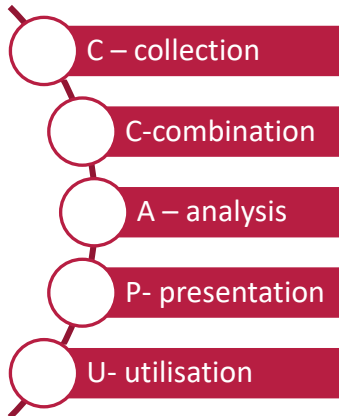


PROMs/PREMs

Now we have established the All Wales PROMs collaborative to learn how to display and compare aggregated PROM data meaningfully alongside clinical outcomes

PROMs – End to End Data Flows

There are five key stages in the end to end process for PROMS



Source: Said Shadi

Data 2 knowledge 2 action



Diabetes Insights & Variation Atlas

[Click here for more](#)



Canolfan Gwerth
mewn Iechyd Cymru
Welsh Value
in Health Centre



National Epilepsy Dashboard

National Epilepsy Dashboard

[Click here for more](#)



Canolfan Gwerth
mewn Iechyd Cymru
Welsh Value
in Health Centre



National Liver Disease Dashboard

National Liver Disease Dashboard

[Click here for more](#)



Last Year of Life Dashboard

[Click here for more](#)

Dashboards - Value in Health (nhs.wales)

Communities of practice

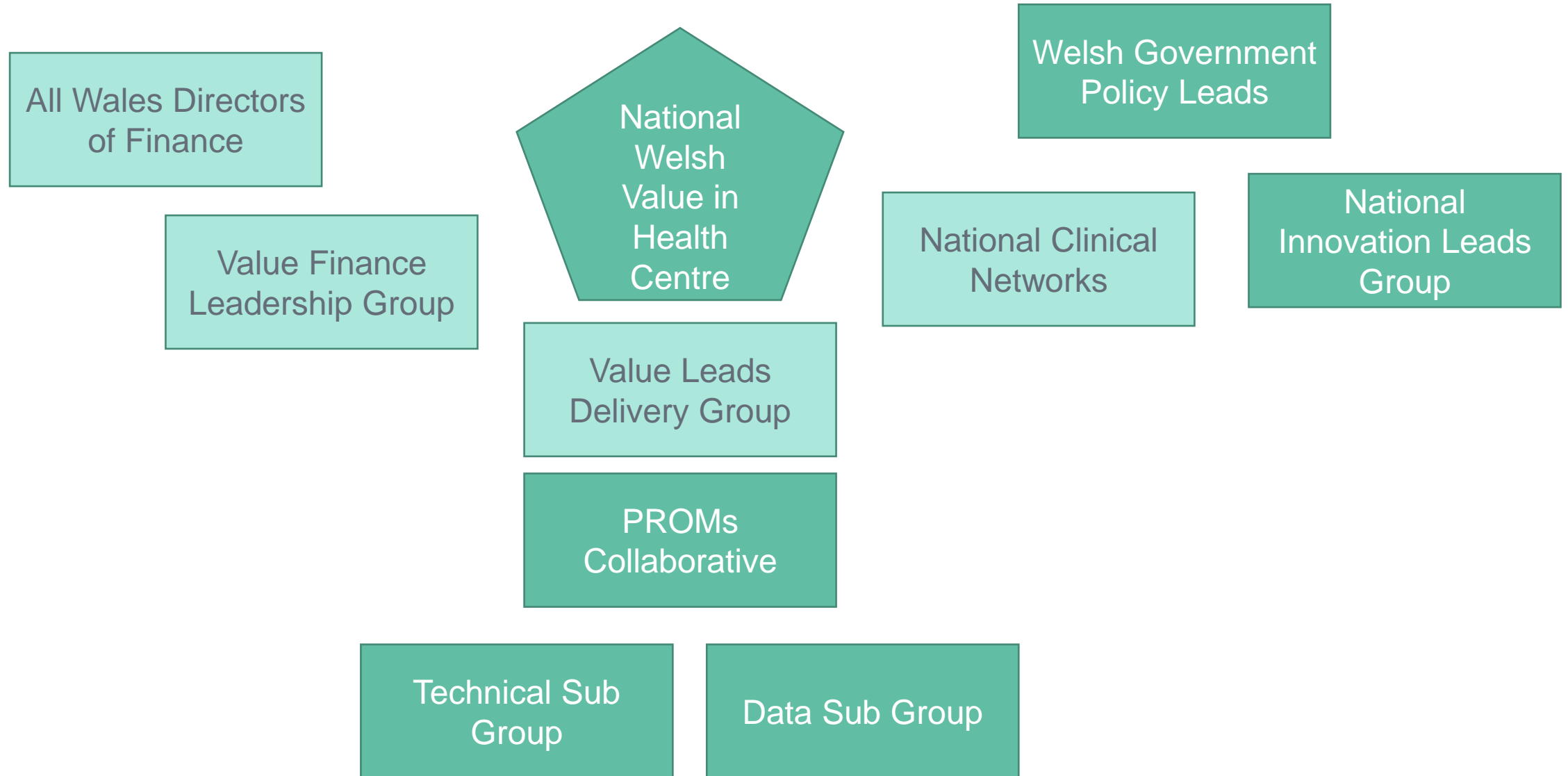
Growing the network and community of practice

A group of individuals who share a passion for Value Based Healthcare

Come together voluntarily to explore how to bring change for the better

A vision to drive improvements across NHS Wales to adopt, spread and scale innovation, ideas and best practice to evidence Value

Growing the network and community of practice



Growing the network and community of practice

Key achievements

The PROMs Standard Operating Model (PSOM) A collaborative approach to collecting and sharing of clinical audit and patient-reported outcome measures (PROM) data. PSOM developed to support the consistent and timely collection of outcomes data embedded in and supporting direct care and Value-Based care models. On implementation PSOM will **simplify linkages** with other datasets such as, costing measurements, analysis and creating relevant insights both locally and at a national level.

PSOM is defined through a requirements specification approved by all HBs and underpins a framework-based procurement to deliver an All-Wales PROMs framework.

Key achievements

Dedicated Value-Based Health care teams across all Health Boards in NHS Wales – expand this

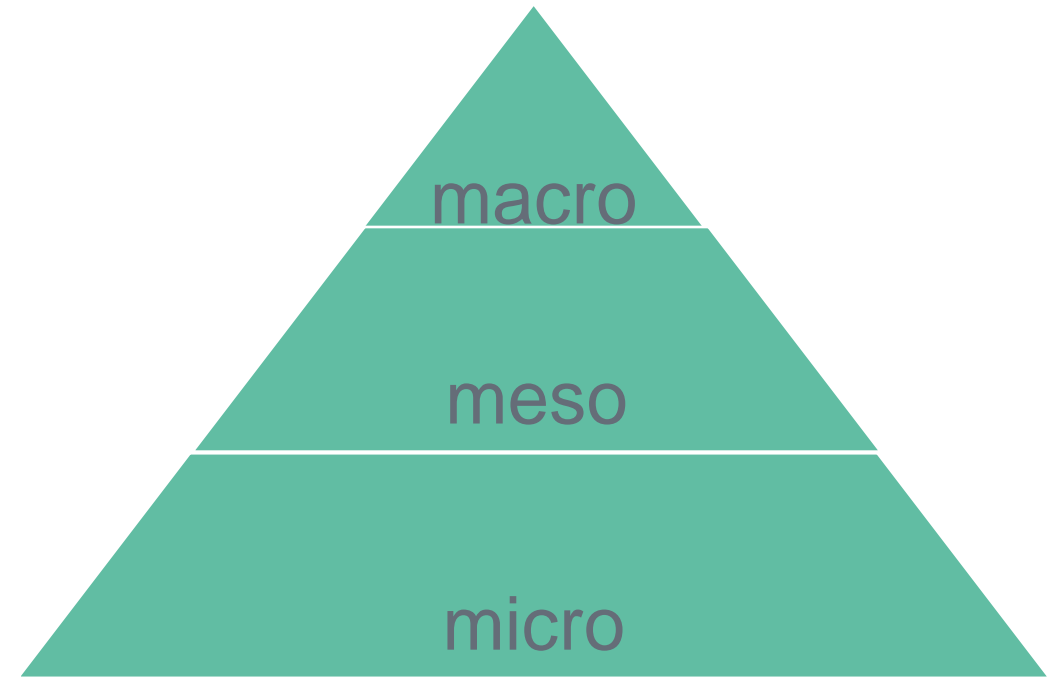
Growing the network and community of practice

“ Our Community of Practice the **All Wales Delivery Leads for Value** has helped to enhance the patient voice, by discussing ideas, issues and aligning our work Programmes to government and national clinical network priorities, that would difficult to find the space for in any other setting ”

**Increasing value across pathways of care,
some key learning**

To truly deliver value there are many things to consider...

- Population health
- Processes of care (pathways)
- Supporting care of the individuals



Nancy's story



82 year old lady with heart problems
Shortness of breath, decreased mobility
History of bilateral swollen legs and repeated cellulitis

Legs started swelling 18 months ago, in last 12 months broken down in numerous areas and leak lymphorrhoea

Referred from her GP, but pressure on the system resulted in a 11 month wait

Nancy's story



During that time suffered 3 episodes of cellulitis
Admitted to hospital for **19** days
District nurses attending daily
Referred to falls clinic, physio and OT
Made to measure shoes from Orthotics

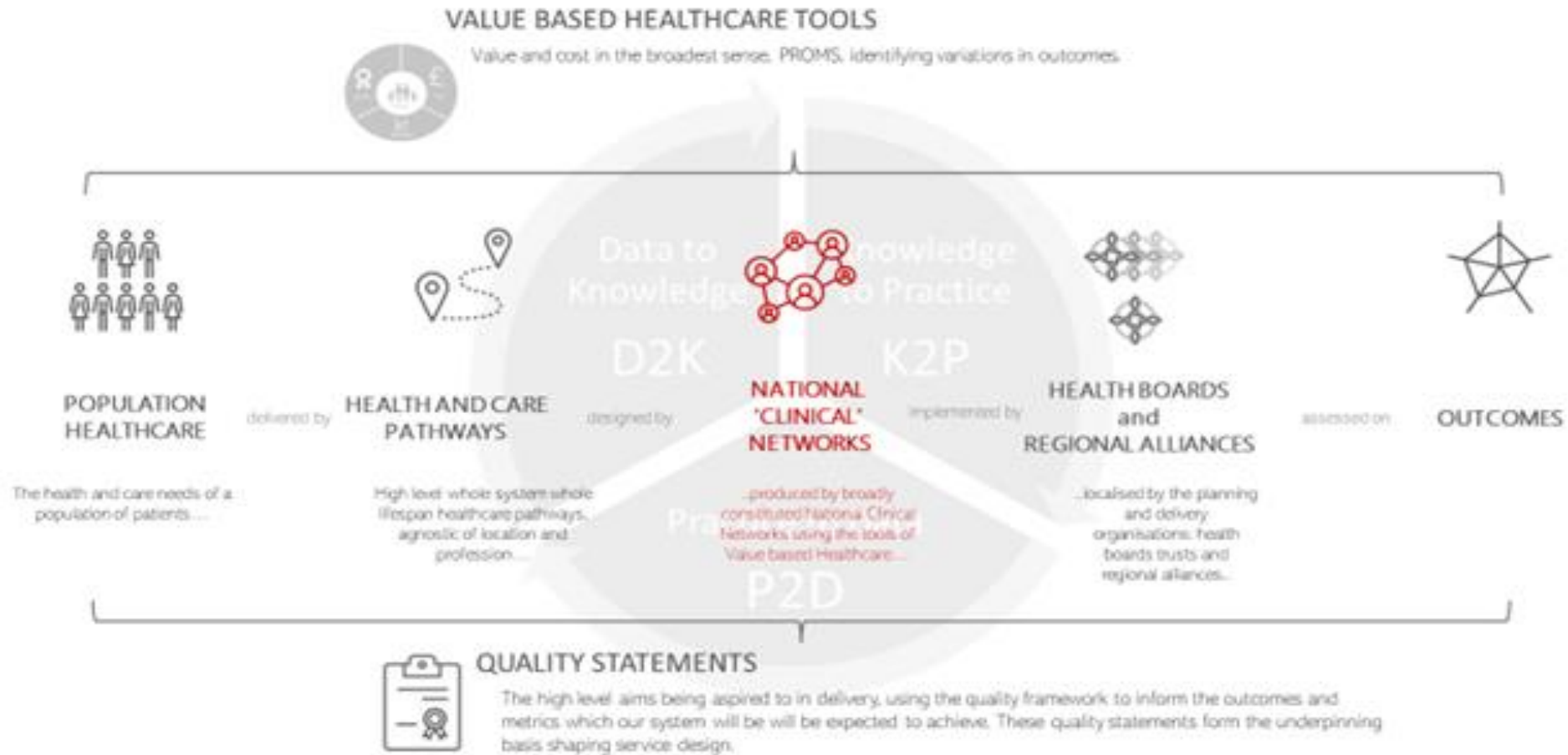
Value to who ?

£25,000 + Social and Economic impact

Outcomes poor ↓

National clinical framework

(courtesy of Dr. Allan Wardhaugh)



Delivering value in healthcare

The sum of all interventions – heart failure



Prevention

Early accurate diagnosis

Optimising intervention

Supportive treatment

End of life care

Public health risk factors, inequalities in health, improvements in acute coronary syndrome pathway

NTproBNP screening prior to echocardiogram reduces costs and improves access

- PROMs and CROMs
- Time to optimisation reduced
- Big reduction in hospital readmission rates
- Community service good results (TDABC could confirm best skill mix)

Optimum positioning of implantable devices

- Joint MDT palliative care/cardiology
 - Advance care planning
 - Symptom burden
 - Preferred place of care

PERSON-CENTRED CARE

VBHC allocation fund – the courage and confidence to do things differently



Early, efficient diagnosis

AF/SVT diagnosis in the
community

Pre-op blood management

Secondary prevention

Alcohol liaison

Capacity release

Digitally enable remote care

Dementia meds

Toxicity monitoring advanced
DMARDs

Supporting patients, optimising outcomes

Palliative care

Heart failure in the community

Psychology in chronic disease

Specialist outcome capture

ATMP outcomes

Value intelligence centre

Velindre cancer centre

Improving chronic disease control, supporting self- management

Technology in gestational diabetes

Virtual pulmonary rehab



Canolfan Gwerth
mewn Iechyd Cymru



Welsh Value
in Health Centre

Thank you - Questions

